

# RapidEye Satellite Imagery

The **RapidEye** satellite system comprises 5 satellites, launched on August 29 2008 to provide unparalleled coverage and resolution.

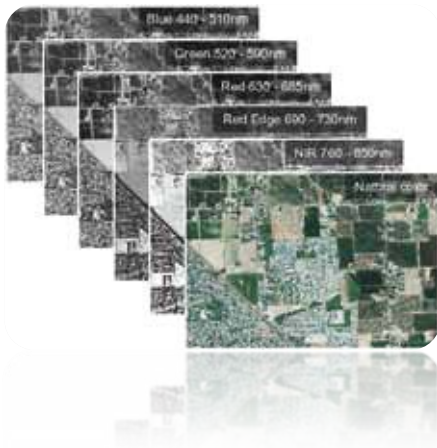
The **benefits** of **RapidEye** include:

- ✓ Daily coverage of anywhere on earth
- ✓ Large orders can be rapidly filled, often within 1 season.
- ✓ Very competitive pricing (€0.95/km<sup>2</sup>)
- ✓ Extensive archive available
- ✓ On demand tasking and rapid delivery
- ✓ Improved vegetation mapping with Red-Edge band
- ✓ Multi-temporal studies are easily achieved
- ✓ Express delivery option (< 24hrs)

The **features** of the **RapidEye** are:

- ✓ Images delivered with 5m pixel size
- ✓ 5 image channels (R,G,B,Red-Edge, NIR)
- ✓ An area larger than India collected every day (4 million km<sup>2</sup>)
- ✓ Ortho-products available for highly accurate base maps
- ✓ Image formats allow easy integration into GIS and image processing software

**5 bands**



**5 satellites**

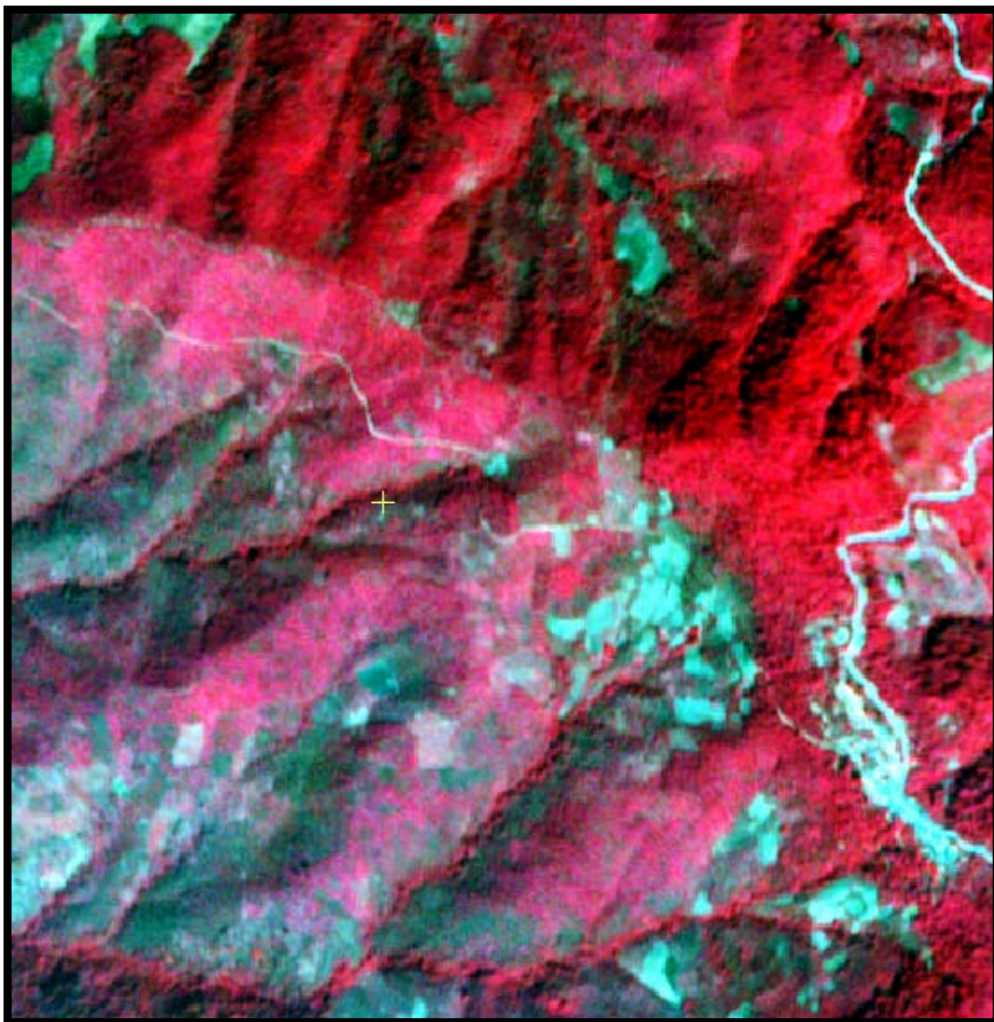


**5m pixels**

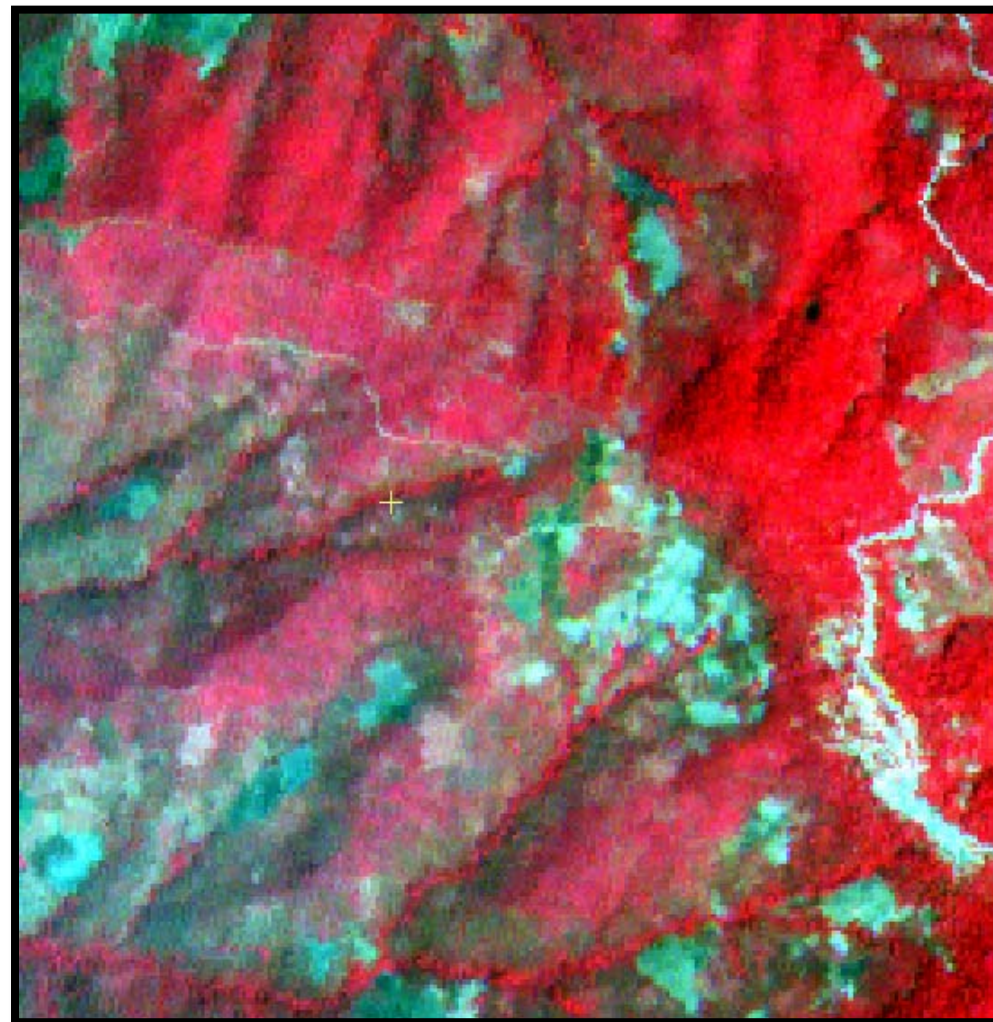


**Aruna Technology** is the exclusive distributor of RapidEye Imagery for Cambodia, Laos, Vietnam, Thailand and Myanmar. Please contact us for more information or a quotation at the details below.

Date: 26Apr11



RapidEye Imagery at scale 1:20,000



ALOS AVNIR-2 Imagery (10m resolution) at 1:20,000